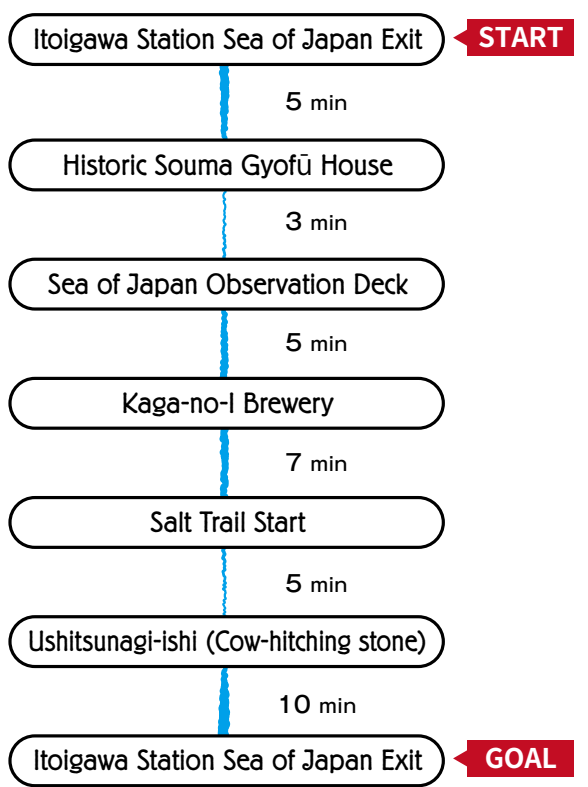


Recommended Walking Courses

Course 1 { 60 min
Culture & History Walk



Historic Souma Gyofu House
 Souma Gyofu was a famous local poet and scholar. His house is preserved exactly as it was when he lived in it decades ago.

Ushitsunagi-ishi (Cow-hitching stone)
 Located in the garden of Saishoji Temple, this rock was once used by the ushikata who drove oxen along the Salt Trail. Few such rocks still exist today.



Ushitsunagi-ishi (Cow-hitching stone) Historic Souma Gyofu House Makino Candies Bronze Statue of Itoigawa's Eight Lucky Gods

Course 2 { 60 min
8 Lucky Gods & Sweets Walk

The wise and beautiful Princess Nunakawa joins Japan's Seven Lucky Gods on this course. Find all the statues!



Gangi Streets and Itoigawa's Eight Lucky Gods
 Itoigawa traditionally experiences very heavy snowfall, so in the central part of town, houses and shops were built with very long eaves called 'gangi.' They were connected together to make a roof over the streets for travelers. Among these eaves sit 8 stone statues, each representing one of Japan's Seven Lucky Gods, with the addition of Itoigawa's Princess Nunakawa. Try to visit them all!

※Due to damage caused by the 2016 Itoigawa Great Fire, statues ③Bishamonten and ⑦Fukurōjin are not on display.

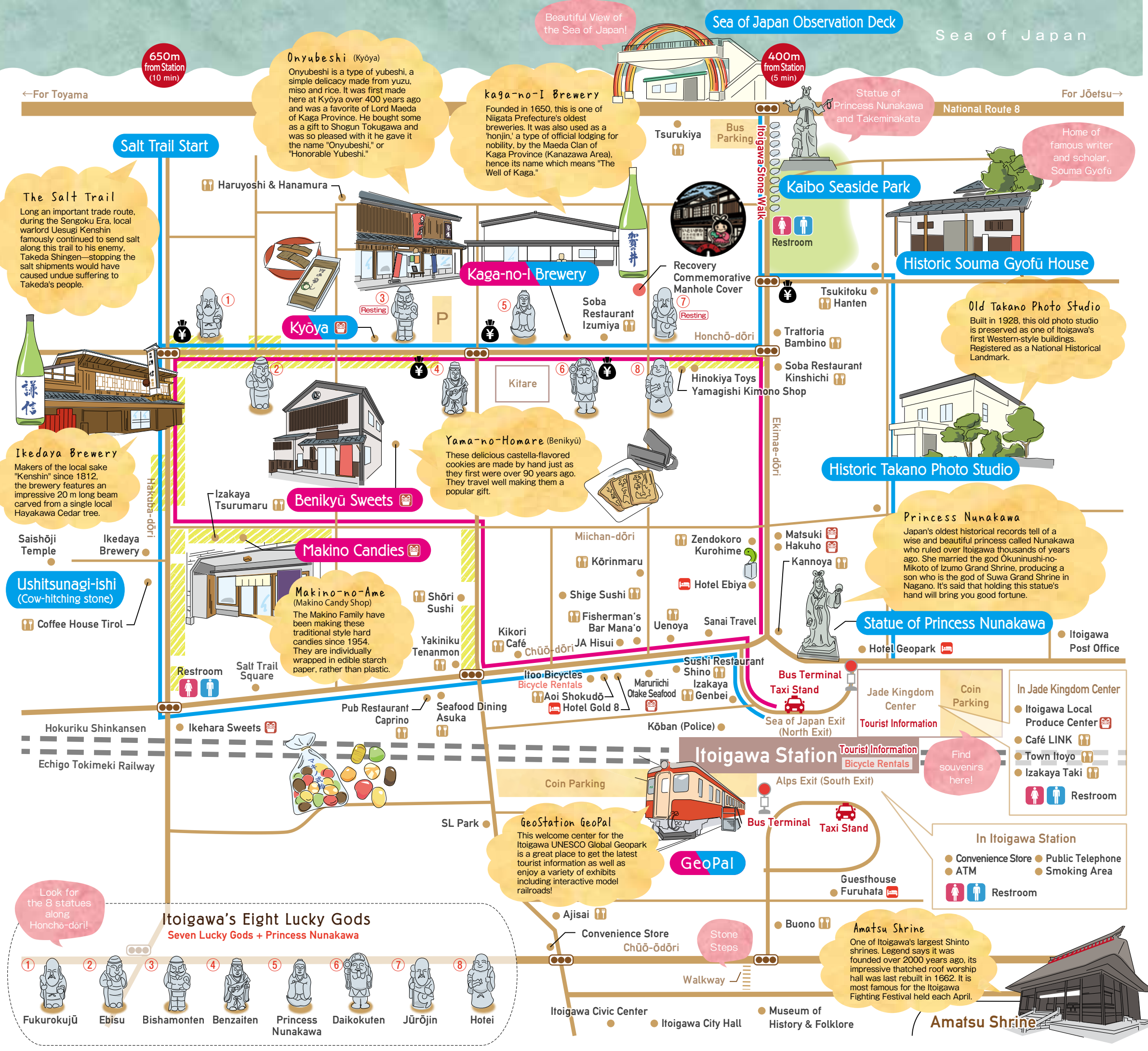


Walk the historic streets of Itoigawa and encounter local cuisine, charming storefronts, as well as rich local history and culture.

Itoigawa Walking Map

[English]





650m from Station (10 min)

Sea of Japan Observation Deck

400m from Station (5 min)

The Salt Trail
Long an important trade route, during the Sengoku Era, local warlord Uesugi Kenshin famously continued to send salt along this trail to his enemy, Takeda Shingen—stopping the salt shipments would have caused undue suffering to Takeda's people.

Ikedaya Brewery
Makers of the local sake "Kenshin" since 1812, the brewery features an impressive 20 m long beam carved from a single local Hayakawa Cedar tree.

Ushitsunagi-ishi (Cow-hitching stone)

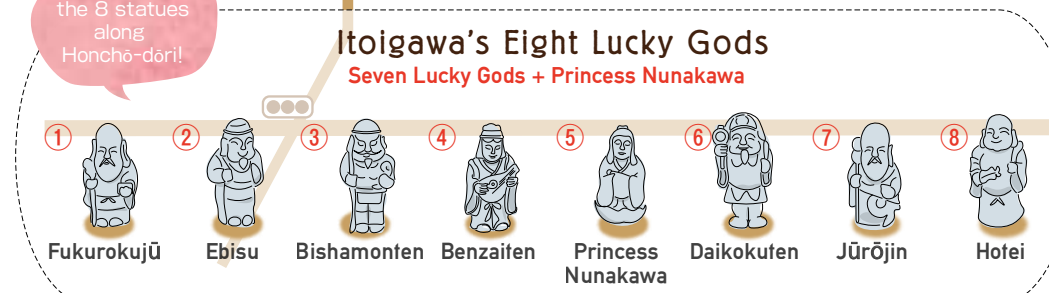
Onyubeshi (Kyōya)
Onyubeshi is a type of yubeshi, a simple delicacy made from yuzu, miso and rice. It was first made here at Kyōya over 400 years ago and was a favorite of Lord Maeda of Kaga Province. He bought some as a gift to Shogun Tokugawa and was so pleased with it he gave it the name "Onyubeshi," or "Honorable Yubeshi."

Kaga-no-I Brewery
Founded in 1650, this is one of Niigata Prefecture's oldest breweries. It was also used as a 'honjin,' a type of official lodging for nobility, by the Maeda Clan of Kaga Province (Kanazawa Area), hence its name which means "The Well of Kaga."



Statue of Princess Nunakawa and Takeminakata

Home of famous writer and scholar, Souma Gyofū



Souvenirs & Local Produce

- Makino Candies**
A long-loved Itoigawa favorite. Handmade candies in many flavors.
9:00 – 18:00 Closed Tue & 4th Mon
- Kyōya**
Making 'Onyubeshi' since the 1600s. A favorite of Shogun Tokugawa!
9:00 – 19:00 Closed Tue
- Benikyū Sweets**
Local castella senbei & sweets shop with 200 years of history.
8:30 – 18:30 Closed Tue
- Ikehara Sweets**
Handmade Japanese sweets. Try "Shio Okuri no Michi!"
8:30 – 18:00 Closed Irregularly
- Maruriichi Otake Seafood**
Specialty shop known for their dried fish, seaweed and more!
8:00 – 19:00 Closed Every Other Tue
- Matsuki & Hakuho**
Gift shop specializing in local sake and jade jewelry.
9:00 – 18:00 Closed Sun
- Itoigawa Local Produce Center**
Gift & souvenir shop located right next to Itoigawa Station.
9:00 – 18:00 Closed Jan 1

Restaurants

- Sushi Restaurant Shino**
Sushi made with local fish!
11:00 – 14:00, 16:30 – 22:00 Closed Mon
- Buono**
Enjoy pizza, pasta, beef stew and more at this western restaurant.
11:30 – 14:40, 17:30 – 21:00 Closed Tue
- Town Itoyo**
Enjoy soba, ramen and more at this restaurant near the station.
11:00 – 14:30 Closed Irregularly
- Coffee House Tiroi**
A traditional Japanese-style café long-loved by local people.
8:00 – 19:00 Closed Irregularly
- Kikori Café**
Featuring coffee hand-selected and roasted by the owner.
10:00 – 20:00 / Tue 10:00 – 17:30 Closed Wed
- Izakaya Tsurumaru**
Enjoy delicious food and drinks late into the night!
17:00 – 3:00 / Sun 18:00 – 23:00 Closed Irregularly
- Seafood Dining Asuka**
Enjoy fresh, seasonal seafood prepared by a local fisherman!
18:00 – 23:00 Closed Sun
- Fisherman's Bar Mana'o**
Enjoy fresh seafood at this "Fisherman's Bar."
17:00 – 24:00 Closed Irregularly
- Uenoya**
Seafood, rice bowls, set meals and more
7:00 – 9:00, 11:30 – 14:00, 17:30 – 21:00
- Kōrinmaru**
Enjoy fried seafood, sashimi and delicious sake at this fisherman's izakaya.
17:00 – 24:00 Closed Irregularly
- Izakaya Genbei**
"Fast, cheap, delicious" is our motto. Enjoy seafood, ramen, yakitori and more!
11:30 – 14:00, 17:00 – 23:00 Closed Sun
- Izakaya Taki**
Enjoy local sake and the taste of Itoigawa's mountains and sea
11:30 – 13:30, 18:30 – 23:00 Sun Lunch Only, Mon Dinner Only
- Trattoria Bambino**
Authentic pizza and steak cooked in a wood-fired oven.
12:00 – 14:00, 17:00 – 24:00 Closed Sun, 2nd & 4th Mon
- Yakiniku Tenanmon**
Enjoy premium black-hair wagyu beef anytime!
17:30 – 24:30 Closed Mon
- Ajisai**
Enjoy Itoigawa's fresh wild vegetables and seafood
Call for hours
- Aoi Shokudō**
Ramen, katsudon and more. Reasonable prices and large servings!
10:00 – 15:00, 17:00 – 20:30 Closed Sun
- Kannoya**
Enjoy kaiseki cuisine and fresh seafood.
11:30 – 14:00, 17:00 – 20:30 Closed Sun
- Zendokoro Kurohime**
Enjoy delicious food and drinks late into the night!
11:00 – 14:00, 17:00 – 22:00 Closed Tue
- Soba Restaurant Kinshichi**
Enjoy delicious soba, unagi (eel) and rice bowls here!
11:00 – 14:00, 17:00 – 19:30 Closed Thu & 3rd Sun
- Soba Restaurant Izumiya**
Handmade soba served in our specially prepared broth.
11:00 – 19:00 Closed Tue, Wed
- Tsukitoku Hanten**
A bit of Yokohama-style authentic Chinese along the Sea of Japan!
11:00 – 14:00, 16:30 – 21:00 Closed Irregularly
- Shōri Sushi**
Local fish served as sushi or sashimi. Try our fried fish, too!
17:00 – 24:00 Closed Mon
- Shige Sushi**
Authentic sushi with fresh, seasonal fish.
11:30 – 22:00 Closed Tue
- Haruyoshi & Hanamura**
Enjoy kappō-style cuisine at this hidden gem.
Reservation Only
- Tsurukiya**
Serving delicious kappō-style Japanese cuisine for over 200 years.
11:00 – 14:00. Dinner by Reservation Closed Irregularly

Legend

- Restroom
- Bank
- Souvenirs & Local Produce
- Restaurants
- Accommodations
- Gangi-covered Street
- History & Culture Walk
- 8 Lucky Gods & Sweets Walk

Discover More Online <http://discover-itogawa.com>