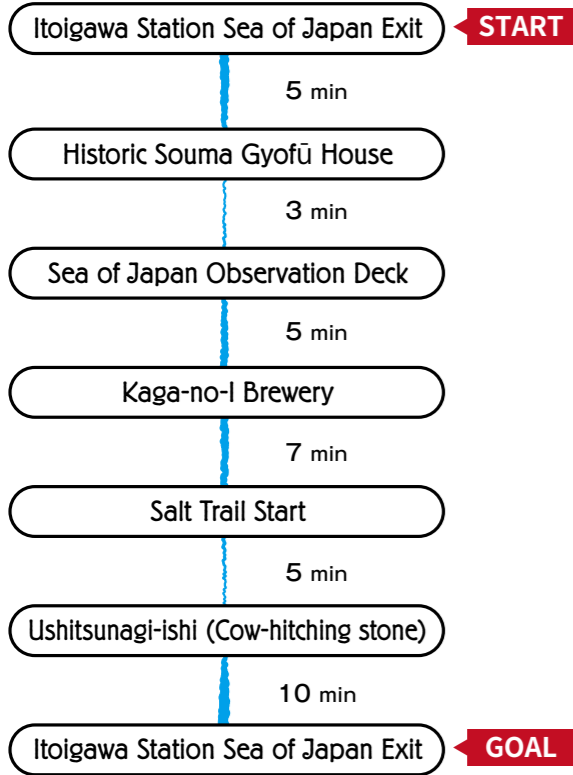




Recommended Walking Courses



Course 1 { 60 min } Culture & History Walk



Historic Souma Gyofū House

Souma Gyofū was a famous local poet and scholar. His house is preserved exactly as it was when he lived in it decades ago.

Ushitsunagi-ishi (Cow-hitching stone)

Located in the garden of Saishōji Temple, this rock was once used by the ushikata who drove oxen along the Salt Trail. Few such rocks still exist today.

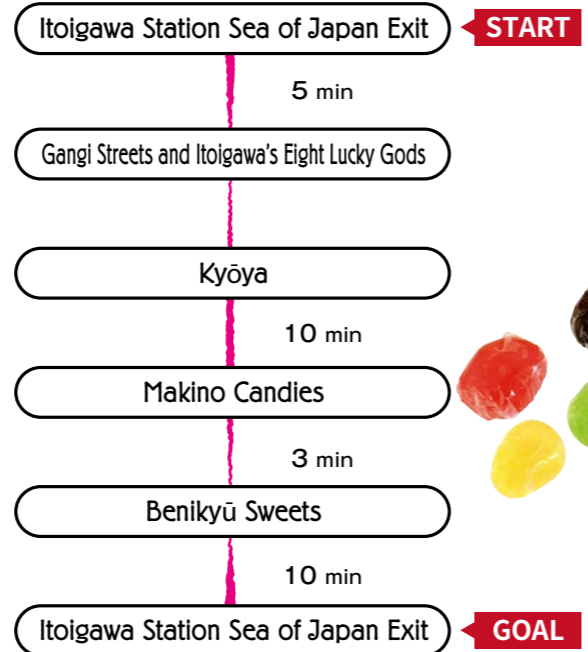


Ushitsunagi-ishi (Cow-hitching stone)

Historic Souma Gyofū House

Course 2 { 60 min } 8 Lucky Gods & Sweets Walk

The wise and beautiful Princess Nunakawa joins Japan's Seven Lucky Gods on this course. Find all the statues!



Gangi Streets and Itoigawa's Eight Lucky Gods

Itoigawa traditionally experiences very heavy snowfall, so in the central part of town, houses and shops were built with very long eaves called 'gangi.' They were connected together to make a roof over the streets for travelers. Among these eaves sit 8 stone statues, each representing one of Japan's Seven Lucky Gods, with the addition of Itoigawa's Princess Nunakawa. Try to visit them all!



※Due to damage caused by the 2016 Itoigawa Great Fire, statue ②Jurōjin is not on display.



Makino Candies

Bronze Statue of Itoigawa's Eight Lucky Gods



Walk the historic streets of Itoigawa and encounter local cuisine, charming storefronts, as well as rich local history and culture.

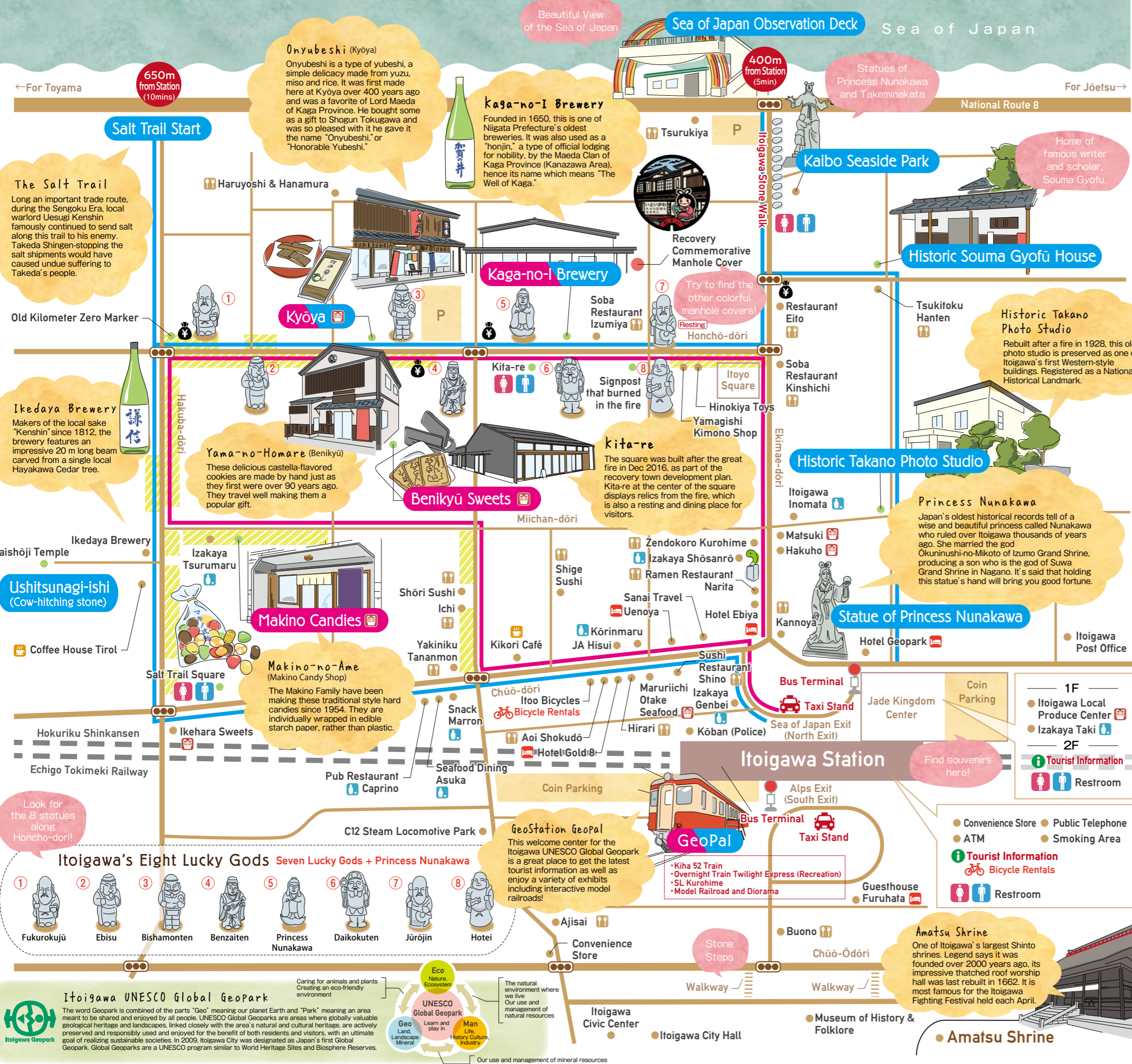


The west end of Niigata!

Itoigawa Walking Map

[English]





The Salt Trail
Long an important trade route, during the Sengoku Era, local warlord Uesugi Kenshin famously continued to send salt along this trail to his enemy. Takeda Shingen-stopping the salt shipments would have caused undue suffering to Takeda's people.

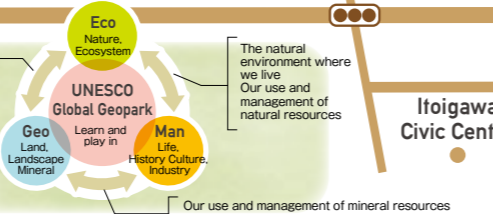
Ikedaya Brewery
Makers of the local sake "Kenshin" since 1812, the brewery features an impressive 20 m long beam carved from a single local Hayakawa Cedar tree.

Ushitsunagi-ishi (Cow-hitching stone)
A stone used by farmers to hitch their oxen to a cart.

Look for the 8 statues along Honcho-dori!

- Itoigawa's Eight Lucky Gods** *Seven Lucky Gods + Princess Nunakawa*
- 1 Fukurokujū
 - 2 Ebisu
 - 3 Bishamonten
 - 4 Benzaiten
 - 5 Princess Nunakawa
 - 6 Daikokuten
 - 7 Jūrojin
 - 8 Hotei

Itoigawa UNESCO Global Geopark
The word Geopark is combined of the parts "Geo" meaning our planet Earth and "Park" meaning an area meant to be shared and enjoyed by all people. UNESCO Global Geoparks are areas where globally valuable geological heritage and landscapes, linked closely with the area's natural and cultural heritage, are actively preserved and responsibly used and enjoyed for the benefit of both residents and visitors, with an ultimate goal of realizing sustainable societies. In 2009, Itoigawa City was designated as Japan's first Global Geopark. Global Geoparks are a UNESCO program similar to World Heritage Sites and Biosphere Reserves.



Souvenirs & Local Produce	
Makino Candies A long-selling Itoigawa favorite. Handmade candies in many flavors. 9:00-18:00 Closed Tue, 4th Mon & New Year Holidays	Maruriichi Otake Seafood Specialty shop known for their dried fish, seaweed and more! 8:00-19:00 Closed Every Other Tue
Kyōya Making "Onyubeshi" since the 1600s. A favorite of Shogun Tokugawa! 9:00-19:00 Closed Tue	Matsuki & Hakuho Gift shop specializing in local sake and jade jewelry. 9:00-18:00 Closed Sun
Benikyū Sweets Local castella senbei & sweets shop with 200 years of history. 8:30-18:30 Closed Tue	Itoigawa Local Produce Center Gift & souvenir shop located right next to Itoigawa Station. 9:00-18:00 Closed Jan 1
Ikehara Sweets Handmade Japanese sweets. Try "Shio Okuri no Michi!" 8:30-18:00 Closed Irregularly	
Restaurants	
Sushi Restaurant Shino Sushi made with local fish! 11:00-14:00, 16:30-22:00 Closed Mon	Tsukitoku Hanten A bit of Yokohama-style authentic Chinese along the Sea of Japan! 11:00-14:00, 16:30-21:00 Closed Irregularly
Buono Enjoy pizza, pasta, beef stew and more at this western restaurant. 11:30-14:40, 17:00-21:00 Closed Mon, Tue	Shōri Sushi Local fish served as sushi or sashimi. Try our fried fish, too! 17:00-24:00 Closed Mon
Yakiniku Tenanmon Enjoy premium black-hair wagyu beef anytime! 17:30-24:30 Closed Mon	Shige Sushi Authentic sushi with fresh, seasonal fish. 11:30-22:00 Closed Tue
Ajisai Enjoy Itoigawa's fresh wild vegetables and seafood. Call for hours Closed Irregularly	Haruyoshi & Hanamura Enjoy kappō-style cuisine at this hidden gem. Reservation Only
Aoi Shokudō Ramen, katsudon and more. Reasonable prices and large servings! 10:00-15:00, 17:00-20:30 Closed Sun	Tsurukiya Serving delicious kappō-style Japanese cuisine for over 200 years. 11:00-14:00, 16:00-22:00 Reservation Required Closed Irregularly
Kannoya Enjoy kaiseki cuisine and fresh seafood. 11:30-14:00, 17:00-20:30 Closed Irregularly	Ichi Enjoy freshly made local food with local sake. 17:00-23:00 Closed Sun
Zendokoro Kurohime Enjoy fresh local seafood served kaiseki-style. 11:00-14:00, 17:00-22:00 Closed Sun	Ramen Restaurant Narita Enjoy the "green jade ramen" at this restaurant near the station. 11:00-14:00, 18:30-24:00 Mon, Sun Lunch Only
Soba Restaurant Kinshichi Enjoy delicious soba, unagi (eel) and rice bowls here! 11:00-14:00, 17:00-19:30 Closed Thu, 3rd Sun	Hirari Enjoy delicious local cuisine here. 11:30-13:30, 18:00-22:00 Closed Sun, Mon
Soba Restaurant Izumiya Handmade soba served in our specially prepared broth. 11:00-19:00 Closed Tue, Wed	Restaurant Eito Serving Japanese set meals and drinks here. 11:30-14:30, 17:30-22:30 Closed Irregularly
Izakaya	
Izakaya Tsurumaru Enjoy delicious food and drinks late into the night! 17:00-27:00/ Sun 18:00-23:00 Closed Irregularly	Izakaya Genbei "Fast, cheap, delicious" is our motto. Enjoy seafood, ramen, yakitori and more! 11:30-14:00, 17:00-23:00 Closed Sun
Pub Restaurant Caprino Enjoy food, drinks and karaoke at this late-night pub. 18:00-26:00 Closed Mon	Izakaya Taki Enjoy local sake and the taste of Itoigawa's mountains and sea. 11:30-13:30, 18:30-23:00 Sun Lunch Only, Mon Dinner Only
Snack Marron Enjoy food, drinks and karaoke here. 18:30-25:00 Open Year Round	Itoigawa Inomata Enjoy French and Japanese cuisine using fresh local ingredients. 18:00-22:30 Closed Sun
Seafood Dining Asuka Enjoy fresh, seasonal seafood prepared by a local fisherman! 18:00-23:00 Closed Sun	Izakaya Shōsanrō Enjoy local seafood and sake served from izakaya-style to kappō-style. 17:00-24:00 Closed Sun
Kōrinmaru Enjoy fried seafood, sashimi and delicious sake at this fisherman's izakaya. 17:00-24:00 Closed Irregularly	
Café	
Coffee House Tirol A traditional Japanese-style café long-loved by local people. 8:00-19:00 Closed Irregularly	Kikori Cafe Featuring coffee hand-selected and roasted by the owner. 10:00-20:00 Closed Tue, Wed

- Legend**
- Restroom
 - Bank
 - Accommodations
 - Souvenirs & Local Produce
 - Restaurants
 - Izakaya
 - Café
 - History & Culture Walk
 - 8 Lucky Gods & Sweets Walk
 - Gangi-covered Street